

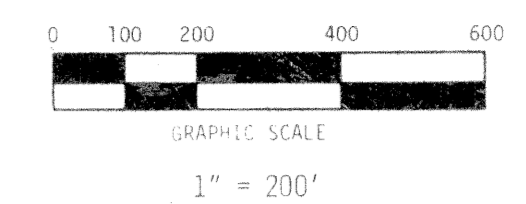
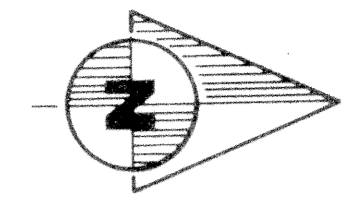
FOX TRAIL

IN SECTIONS 26, 35, AND 36,
TOWNSHIP 43 SOUTH, RANGE 40 EAST
PALM BEACH COUNTY, FLORIDA

JULY 1975

CONRAD W. SCHAEFER CONSULTING ENGINEERS, INC.
PALM BEACH COUNTY, FLORIDA

"DETAIL"
NOT TO SCALE



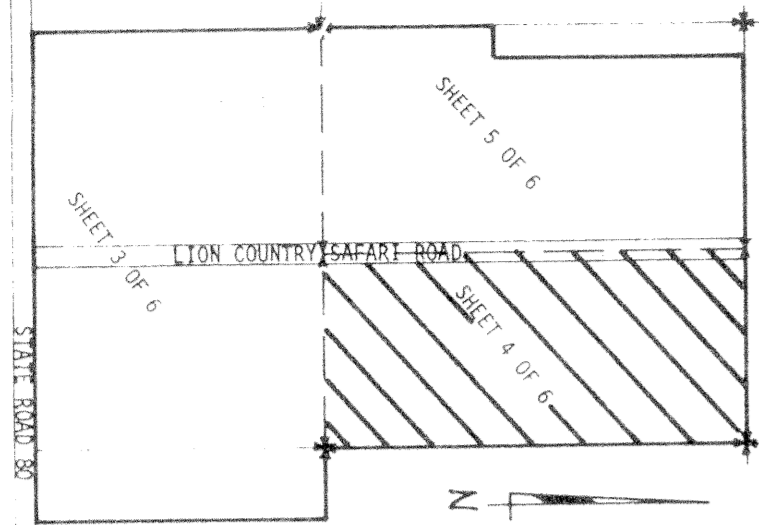
STATE OF FLORIDA
COUNTY OF PALM BEACH

THIS PLAN WAS FILED FOR RECORD
AT _____ M. THIS _____ DAY OF _____
19____, AND DULY
RECORDED IN PLAT BOOK NO. _____
PAGE _____

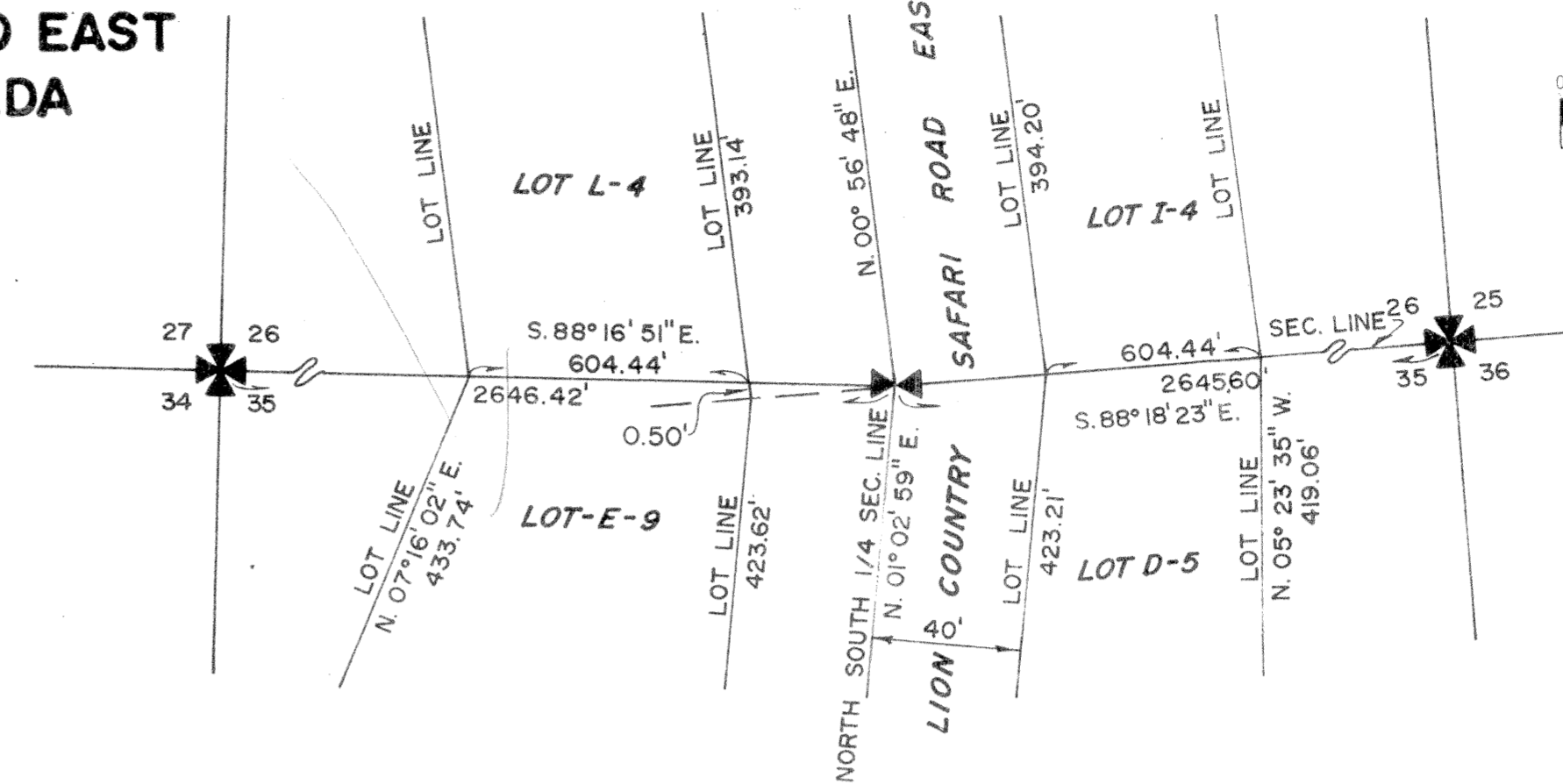
JOHN B. DUNKLE, CLERK
CIRCUIT COURT

BY _____

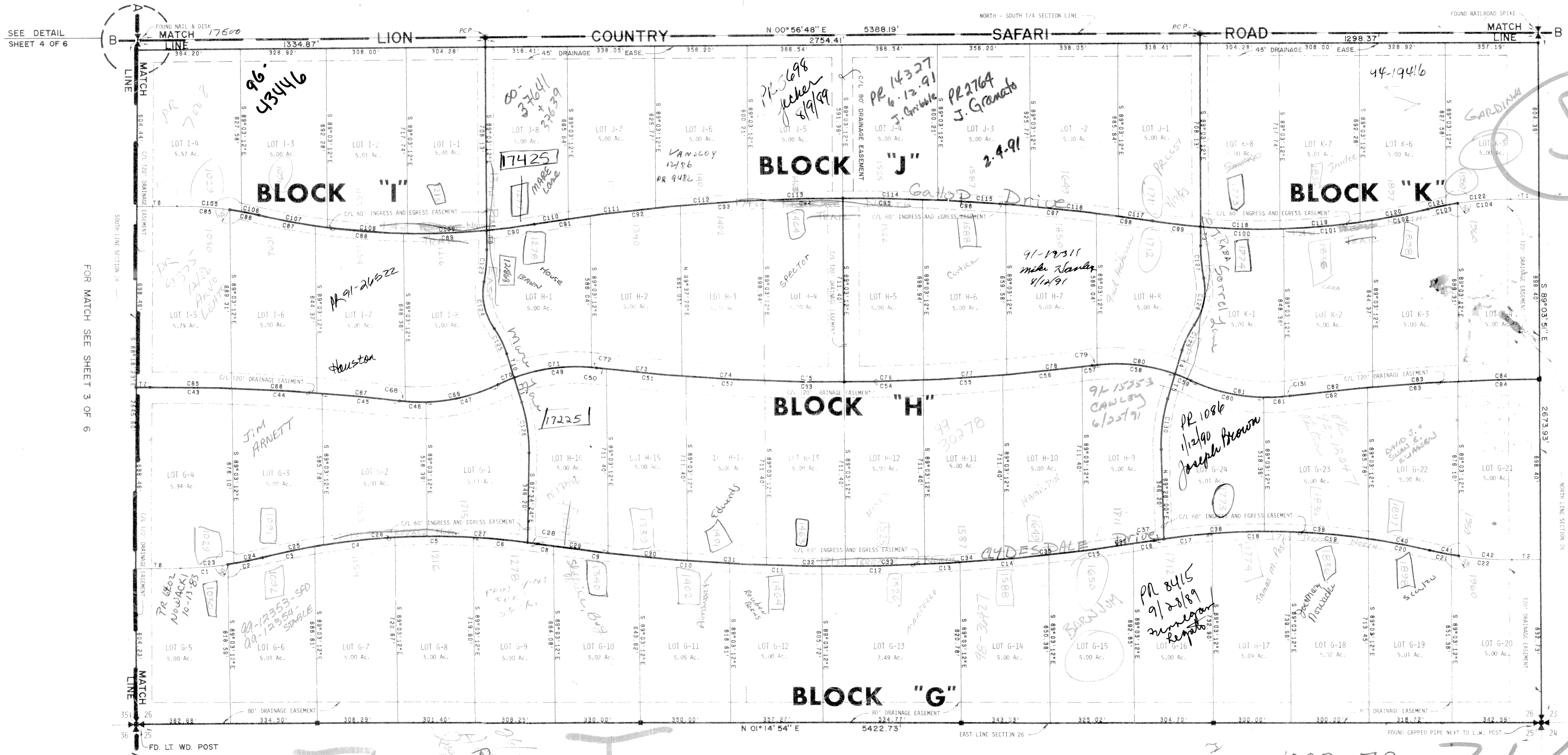
160



KEY MAP
NOT TO SCALE



FOR MATCH SEE SHEET 5 OF 6



UNPLATTED
ACREAGE

FOX TRAIL

UNPLATTED
ACREAGE

1000-173 31/160